

Installation Instructions

CA004

Highway Peg Mounts

440 South Pine Street
Burlington, WI 53105
262-763-8222
rivcoproducts.com

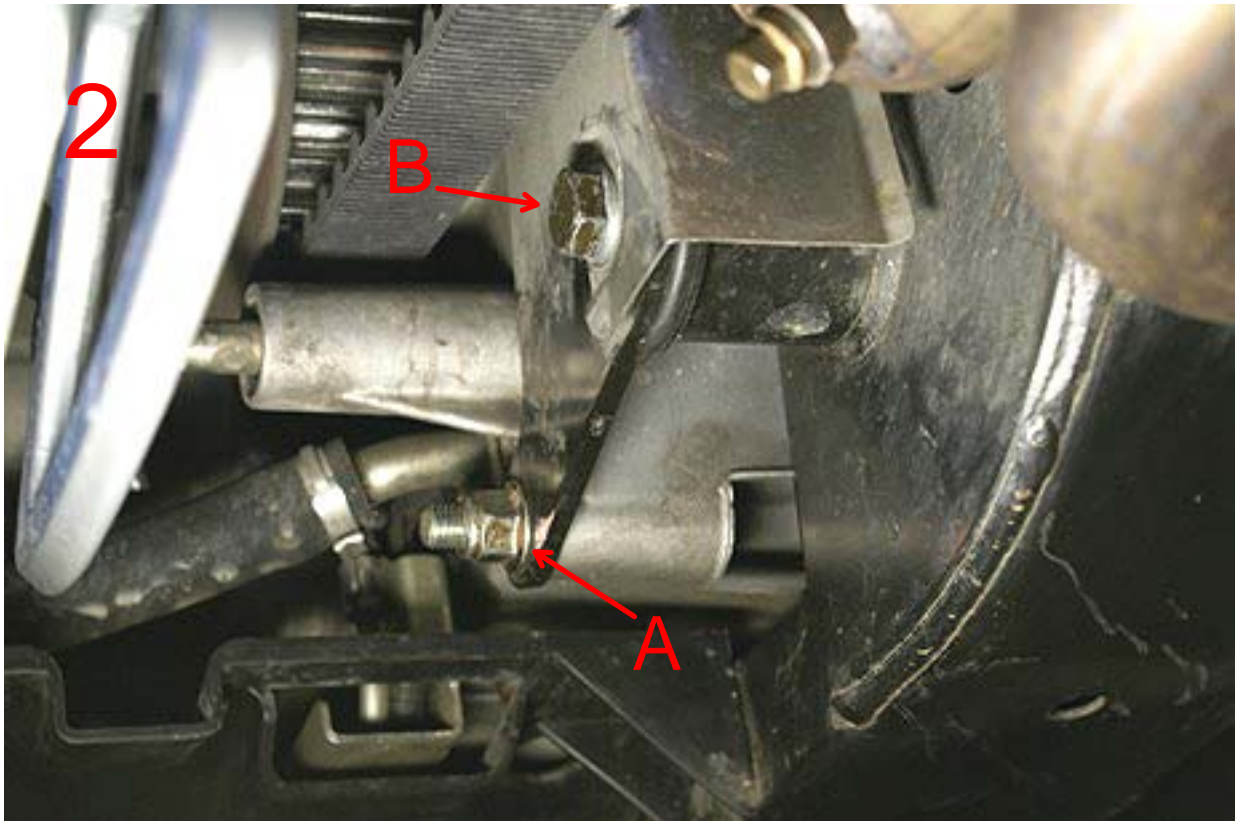
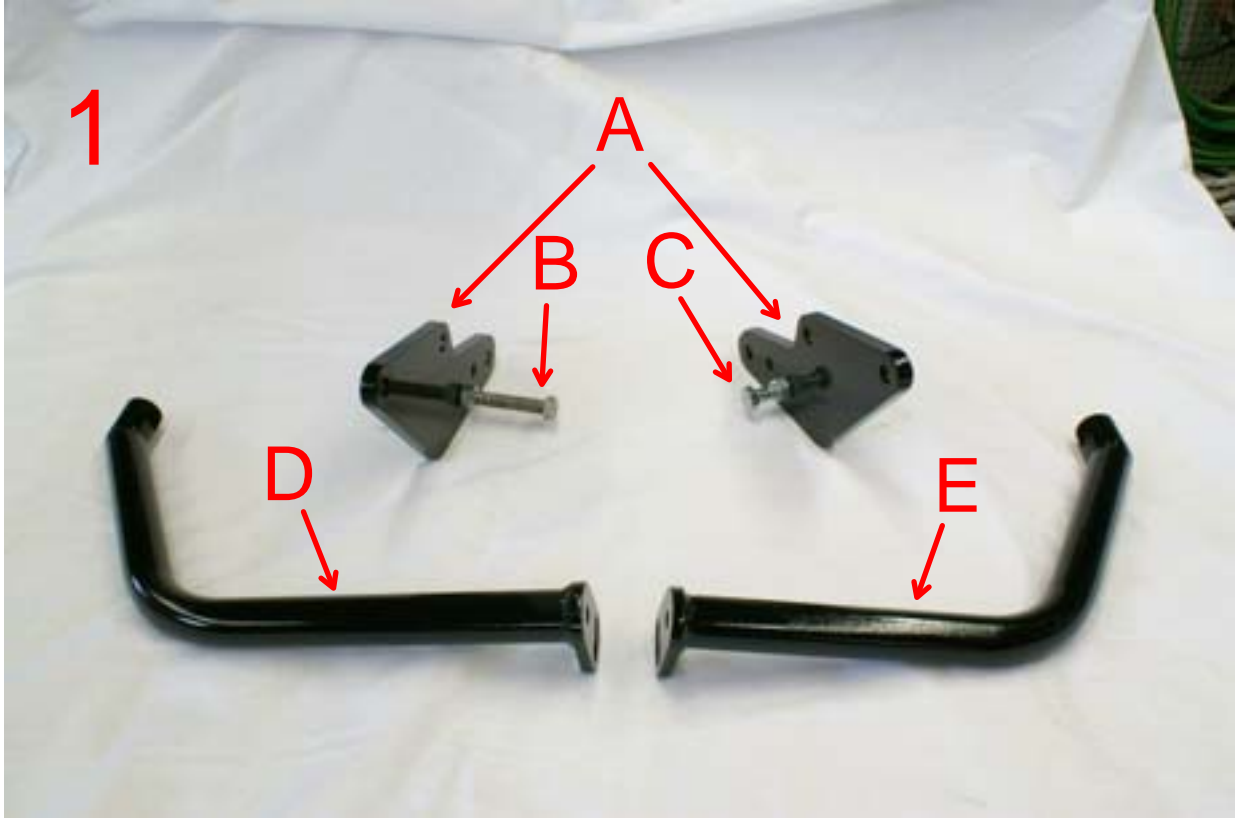


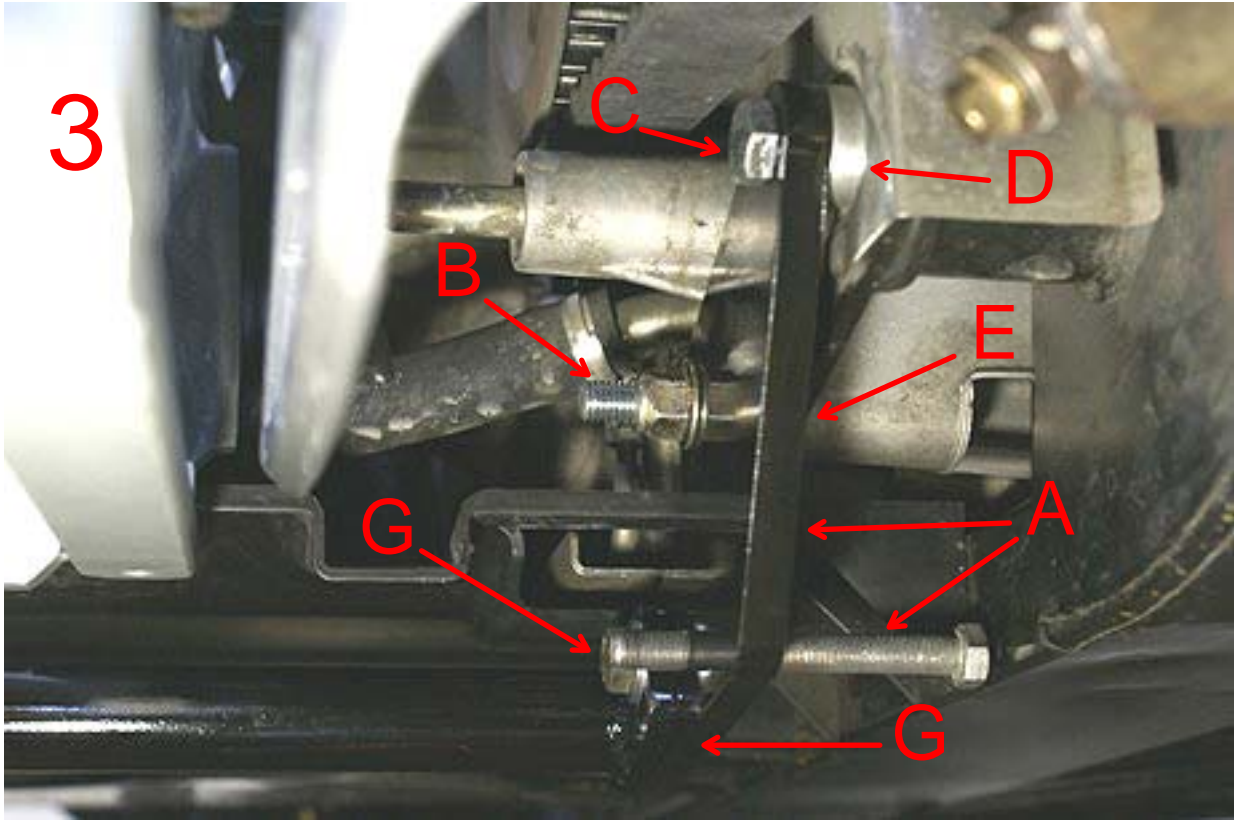
CA004

Highway Peg Mounts for Cam-Am Spyders INSTALLATION INSTRUCTIONS

1. Locate the mounting plates (see photo 1A). As shown in photo (1B) thread the supplied 3/8"x3" bolt and nut into the plate about 1", this will be the Left side mounting plate. As shown in photo (2C) thread the supplied 3/8" x 1 1/2" bolt and nut into the remaining plate also about 1", this will be the Right side mounting plate. Do not tighten the nuts as these are adjusting bolts and will be set later.
2. Referring to photo (2A) (under the left side of the Spyder shown), remove the 10mm (15mm wrench size) nuts from the engine mounting bolts (one on each side). Note: these bolt heads are kept from rotating by a built in hex socket on the engine case. Remove the bolts by pushing them inward toward the center of the frame and out thru the small access hole on the left side just below the bolt hole using a long needle nose pliers or a magnet. Locate the supplied 10 x 80mm bolts and install them into the holes from the center out just as the originals were. Referring to photo (2B) remove the 10mm (17mm wrench size) engine mounting bolt and nut. Note: this is a very long bolt. When removing it you will need to flex or bend the black plastic body panel quite a bit for it to clear and be removed, but this will not break or deform the body panel.
3. Locate the four supplied aluminum spacers. Place one spacer onto the 10 x 80mm engine mounting bolts as shown in photo (3E). Install the left mounting plate (the one with the longer bolt, photo 3A) onto the 10 x 80 mm engine mounting bolt (photo 3B), then the original nut and make finger tight (if installing with Rivco floorboards see note below). Install the supplied 10 x 240mm bolt thru the mounting plate (photo 3C). Next place one of the spacers onto the bolt as shown in photo (3D), then push the bolt all the way thru while flexing the body panel in and out of the way.
4. Install the remaining Right mounting plate in the same manner with the remaining two spacers going between the frame and plate as on the left. Install the two original nuts and tighten securely (30-38 ft. lbs.). Tighten the remaining nut on the left 10 x 80 mm bolt on the left side. Back out the two adjusting screws photo (1 B & C) until the head of the bolt is touching the frame then another 1/2 turn to seat them firmly against the frame. While holding the bolt with one wrench use another to tighten the jam nut securely.
5. Install the left and right arms (photo 1D & 1E) using the four supplied 3/8" x 1" bolts and washers as shown in photo (3G) making them finger tight only at this time. Next install the foot peg set you have chosen onto the upper ends of the arms using the remaining supplied 3/8" x 1 1/4" Allen head bolts and lock washers. Set the position of the pegs as desired and tighten the Allen screws then rotate the arms forward or back as desired and tighten the four arm mounting bolts securely (24-28 ft. lbs.).

NOTE: Installing with Rivco floorboards - do not use the thicker 3/8" aluminum spacers provided with the floorboard set as this space will be taken up by the thickness of the highway peg mounting plates (DO still use the 1/4" spacers as directed that are supplied with this highway peg mount set). Also remove and do not use the adjusting bolt supplied with the floorboard set. Then proceed as per the instructions above.





RIVCO Products, Inc.
440 S. Pine St.
Burlington, WI. 53105
262-763-8222
rivcoproducts.com