

## HD006A

### Fork mounted LED driving light set

For 1996-2013 Harley Davidson FLH models including Tri Glide.

1. Lay out the supplied parts and familiarize yourself with them.
2. Remove the upper brake caliper mounting bolt from each fork leg using a 5/16" hex wrench. Using the supplied longer caliper bolts (1A) install the light mounting brackets (1B) as shown in diagram (1) and tighten the bolts securely (22-26 ft. lbs.)
3. Bolt the driving light assemblies to the installed mounting brackets as shown using the supplied hardware. Place the supplied lock washers (1C) onto the button head hex screws (1D). Place this thru the hole in the light assembly bracket followed by a serrated washer (1E), align up and down as desired and tighten securely (14-16 ft. lbs.).
4. Route the wires from the lights to the rear and up along the brake line to the steering head securing them every four to six inches as needed using the supplied cable ties.
5. Most FLH models are equipped with an unused accessory switch next to the spot light switch. You may use this switch instead of the supplied switch if desired. Find a suitable location to mount the switch either into the switch panel or fairing by drilling a 7/16" hole or you can surface mount it with the adhesive square on the backside of the switch.
6. Referring to the supplied wiring diagram make the electrical connections as shown using the supplied wire, connectors, relay and fuse wire. For the connection to the switch that reads "connect to any power when ignition is on" a good and easy to locate source for this is one of the blue wires that goes to each turn signal which powers the running light function in the signals.
7. Secure the relay and all loose wires using the supplied cable ties.

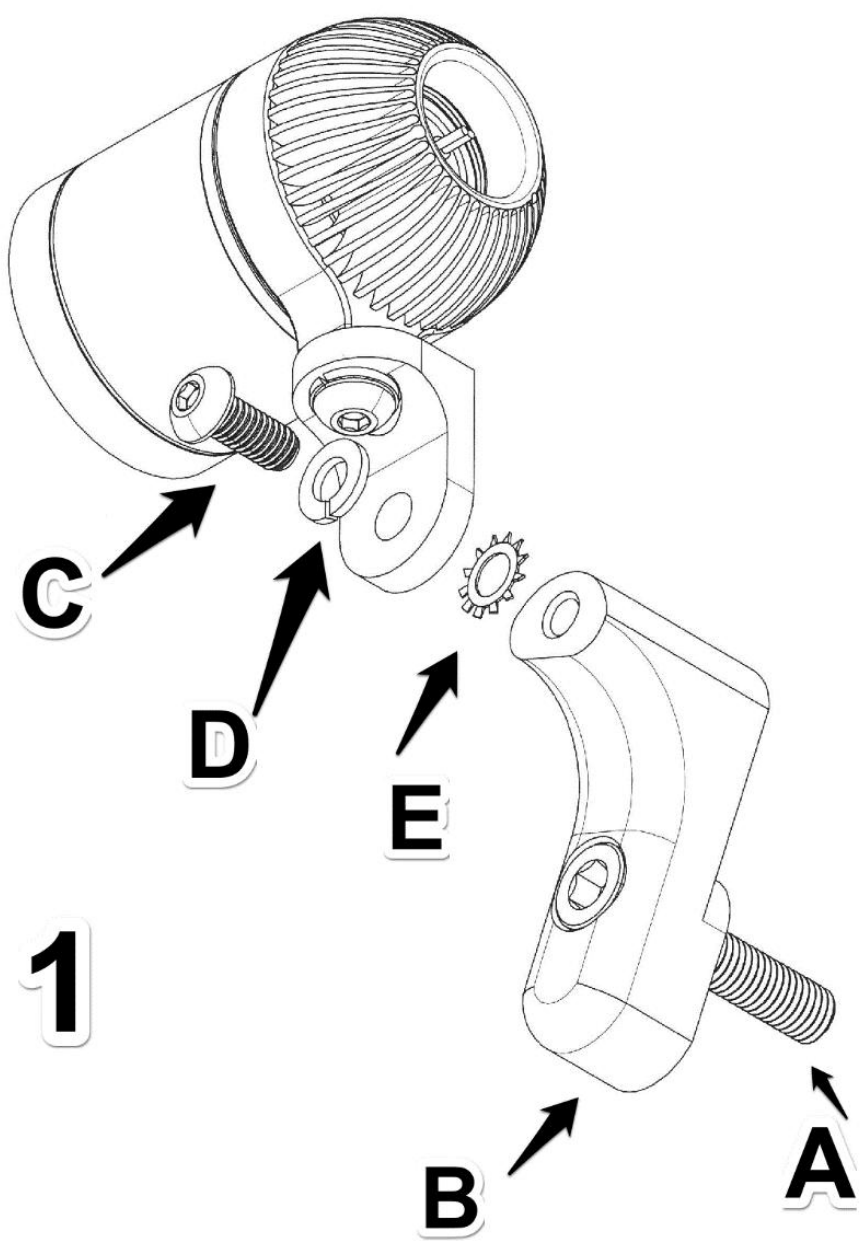


**RIVCO Products, Inc.**

**440 S. Pine St., Burlington, WI. 53105 262-763-8222**

*To register your warranty and see many other cruiser and bagger accessories, please visit our website.*

**[www.rivcoproducts.com](http://www.rivcoproducts.com)**



**1**

# HD006A/HD006B/IC006 DRIVING LIGHT WIRING DIAGRAM

APR 19, 2018

